

Antioch Sakai Address: <https://sakai.antioch.edu>
AT Web Site Address: <http://www.antioch.edu/at/>

Introduction

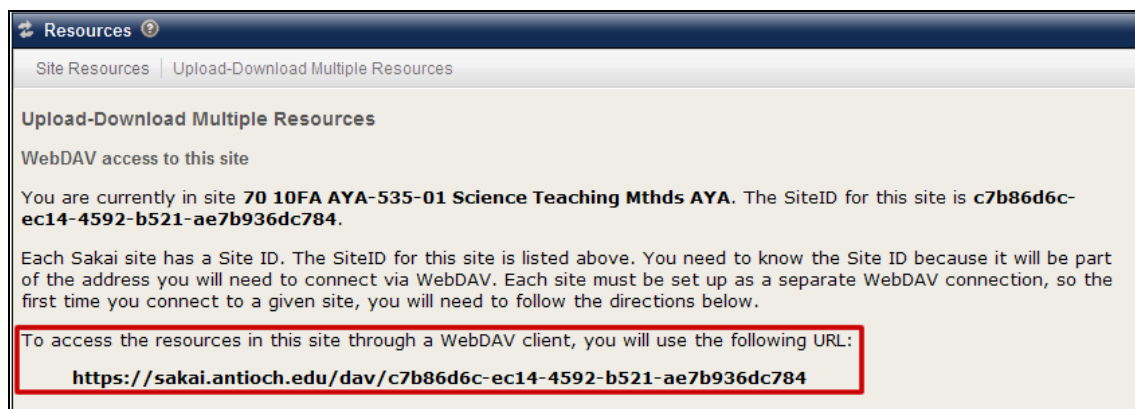
Files can be copied from your local system to your **My Workspace** or site **Resources** (assuming that you have permission in the site to add files in the **Resources** tool—Instructors in course sites are automatically granted this permission, as are those with the role of Academic Support) using the Add button in the Resources tool. To copy several files or an entire folder all at once however, software called **WebDAV** can be used to drag files or folders from your local computer to or from the site Resources folders. **WebDAV** also has an added advantage in that it gives the user the ability to transfer files larger than 20 Mb into Antioch Sakai. It is recommended, for the sake of those with less than optimum Internet connections, that the number of such large files loaded into a site be kept to a minimum.

Several setup steps are required to make your computer treat the site **Resources** folder as another folder on your computer. Once you have set up a particular course or project resource folder using **WebDAV**, you can drag files and folders to the course or project Resource area from your local computer and vice versa. Please note that these connections are specific to the computer you are using, so if you change computers you will have to set up the connection again.

Note: the following instructions are oriented toward using WebDAV with a course site. However, they will work equally well for you MyWorkspace or a project site.

First Steps – Get Your Site URL

Go to **Resources** in your Antioch Sakai course site, then click on ‘Upload-Download Multiple Resources’ in the menu at the top. You will see the following information:



As the illustration indicates, Each Antioch Sakai site has a Site ID. The SiteID for a given site is listed in bold on the Upload-Download Multiple Resources page. While you will need to know the Site ID because it will be part of the address you will need to connect via **WebDAV**, for the purposes of creating a network connection, you will only need the URL, also listed in bold. As an example, the URL associated with 70 10FA AYA-535-01 Science Teaching Methods AYA is: **<https://sakai.antioch.edu/dav/c7b86d6c-ec14-4592-b521-ae7b936dc784>**. Make a note of the URL (or copy and paste it into a document) for later use as a first step.

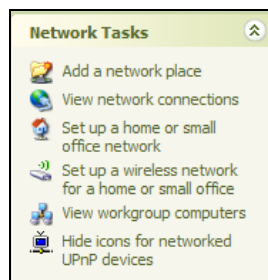
WebDAV for Windows

Note: There must be at least one object (file, folder etc.) in the course or project Resource folder before you begin the setup procedure. This procedure needs to be done once for each site before you can use WebDAV to transfer files to and from any one site.

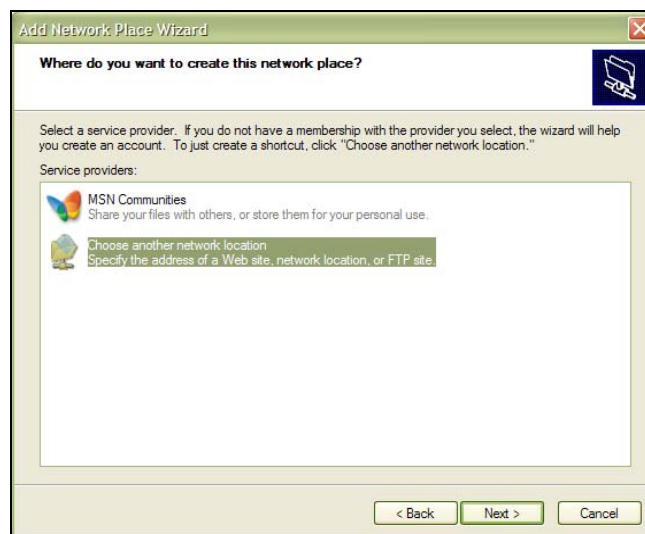
1. In Windows XP, click on the **Start** button. In Windows Vista, click on **Computer**.
2. In Windows XP, click on the **My Network Places** icon to open the Network Places folder. In Windows Vista, click **Map Network Drive**.



3. In Windows XP, double-click on the **Add Network Place icon**. In Windows Vista, On the Map Network Drive screen, click "Connect to a Web site that you can use to store your documents and pictures". Click **Next**.



4. Click on the bottom choice: "Choose another network location". Click **Next**.



5. In the "Internet or network address" field, type the URL for this site you copied earlier. Click **Next**.

Note: If you receive an alert such as "The folder you've entered does not appear to be valid," it could be there are no resources yet in your site. Go to the site and add a file to initialize the Resources folder, then return to Step 1.

6. When asked for your username and password, enter your Antioch Sakai username and your password.
7. Enter a name for the course or project resources you are adding. This name is used on your computer when referencing the course or project resource folder. Click **Next**.

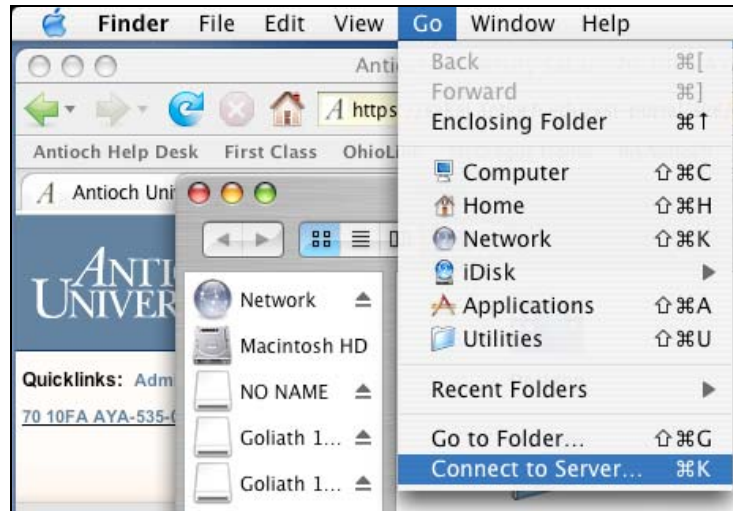


8. Click **Finish** to complete the set up.
9. When the setup is complete, for XP users the course or project resources folder will appear in your My **Network Places** as a folder. It will also show up under **My Network Places** in Windows Explorer, where it will act just like any other folder in Windows Explorer.
10. You can now drag files and folders to and from your computer and the site Resources folder.

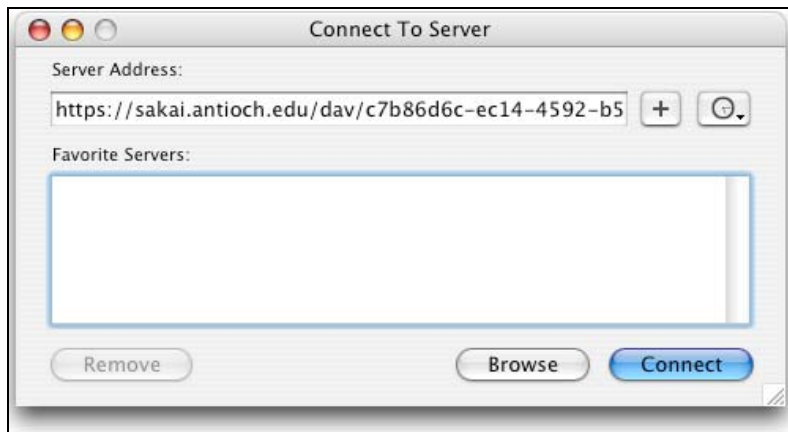
WebDAV for Mac (OS X 10.4 or higher)

Note: There must be at least one object (file, folder etc.) in the course or project resource area before you begin the setup procedure. This procedure needs to be done once for each site before you can use WebDAV to transfer files to and from any one site.

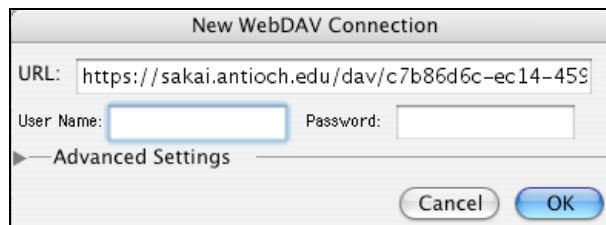
1. From the Finder, select "Go" from the menu bar and then select "Connect to Server..."



2. In the resulting dialog box, type/paste in the path you copied previously.



3. Press the "+" button to save this path for future use, then click **Connect**.
4. Type in your username and password and click **OK**.



5. You will now see a window on your Macintosh screen that represents the resources in your site. You can now drag and drop files into this window and delete files by dragging them to the Trash.

Alternative WebDAV Instructions for Mac

If the above instructions do not work for you or you are running an older version of Mac OS X (10.0 to 10.3), there is an alternate way to set up a **WebDAV** connection.

Note 1: These instructions include the download of a program named Goliath. Goliath is a freeware application available from the WebDAV.org web site. For more details regarding Goliath, go here: <http://www.webdav.org/goliath/help0.9/index.html>

Note 2: There must be at least one object (file, folder etc.) in the course or project resource area before you begin the setup procedure. This procedure needs to be done once for each site before you can use WebDAV to transfer files to and from any one site.

1. Download the Goliath WebDAV client at:
<http://www.webdav.org/goliath/#download>

Downloads

Classic MacOS

An Disk image containing the latest version (1.0.1) of this application can be downloaded [here](#) (approx 1.5 MB BinHex encoded disk image). Decompress the file and double click on the .img file. A disk image named 'Goliath 1.0.1' should now be available. Simply drag and drop the Goliath folder contained within the disk image to your hard disk.

Mac OS X

DiskCopy archive for Mac OS X is available [here](#). Decompress the file and double click on the .dmg file. A disk image named 'Goliath 1.0.1' should now be available. Simply drag and drop the Goliath folder contained within the disk image to your hard disk.

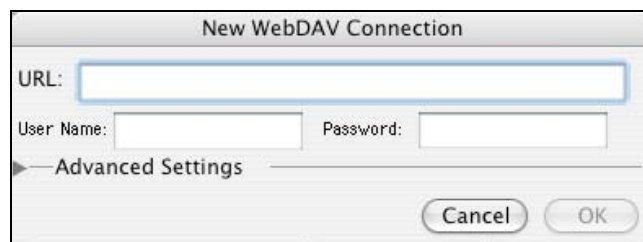
2. Decompress the file and double-click on the .dmg file. (Depending on your version and configuration of Stuffit, the disk image may automatically mount.) A disk image named "Goliath 1.0.1" should now be available.



3. Simply drag and drop the Goliath folder contained within in the disk image to your hard disk.
4. Open the Goliath application.



5. In the WebDAV Connection dialog box, type in the path you copied earlier.



6. Type in your username and password.
7. Click the Advanced settings tab and check the box next to "**Disable Encoding of Macintosh Recourse.**" Click "**OK**".
8. You will now see a window on your Mac screen that represents the resources that are in your site. You can now drag and drop files into this window or use the "Web" menu to upload and download files.